

ANÀLISI COMPARADA EVOLUCIÓ SECTORS ECONÒMICS 2008 – 2013

BADALONA – PROVÍNCIA DE BARCELONA

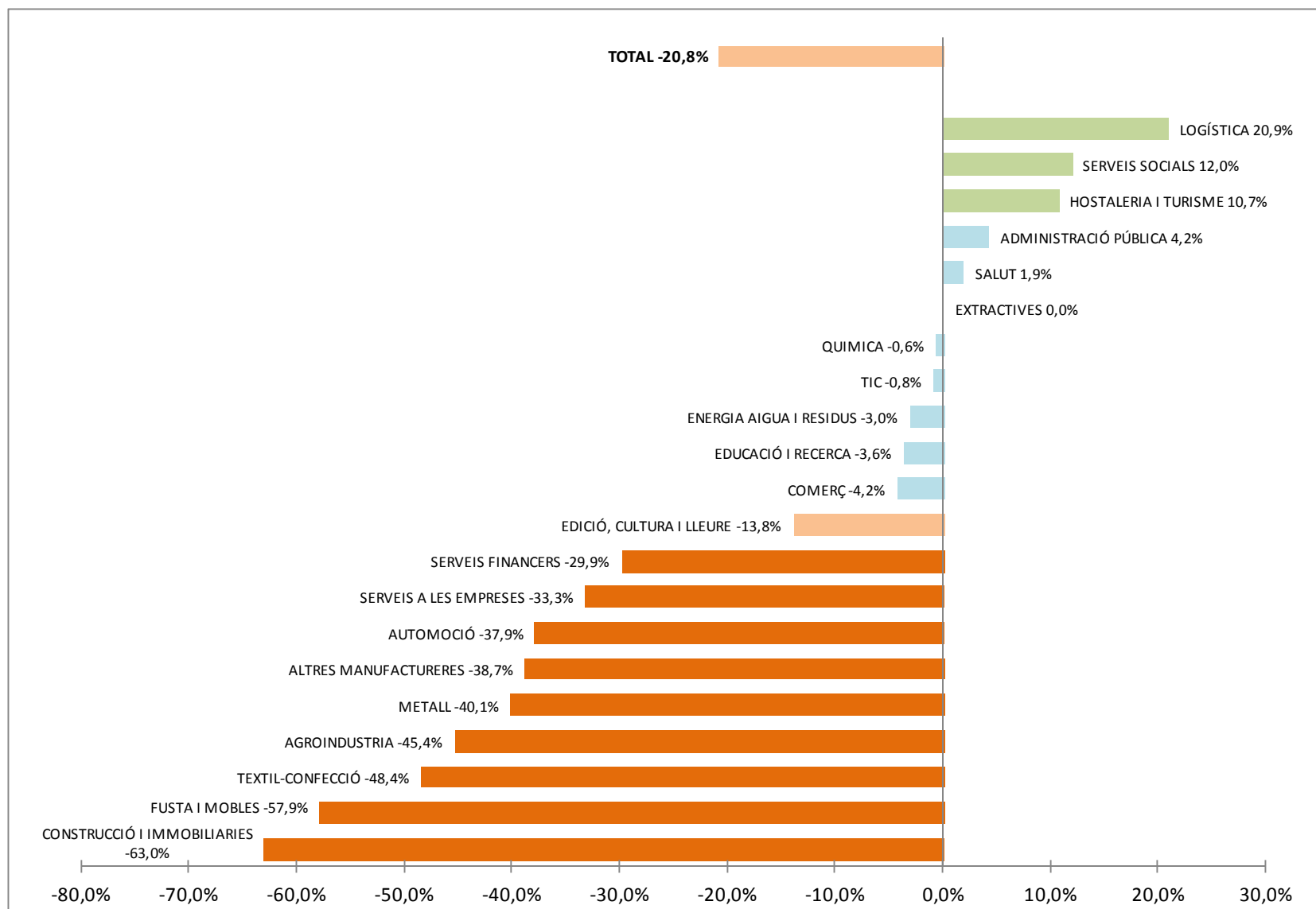


OBSERVATORI DE DESENVOLUPAMENT LOCAL

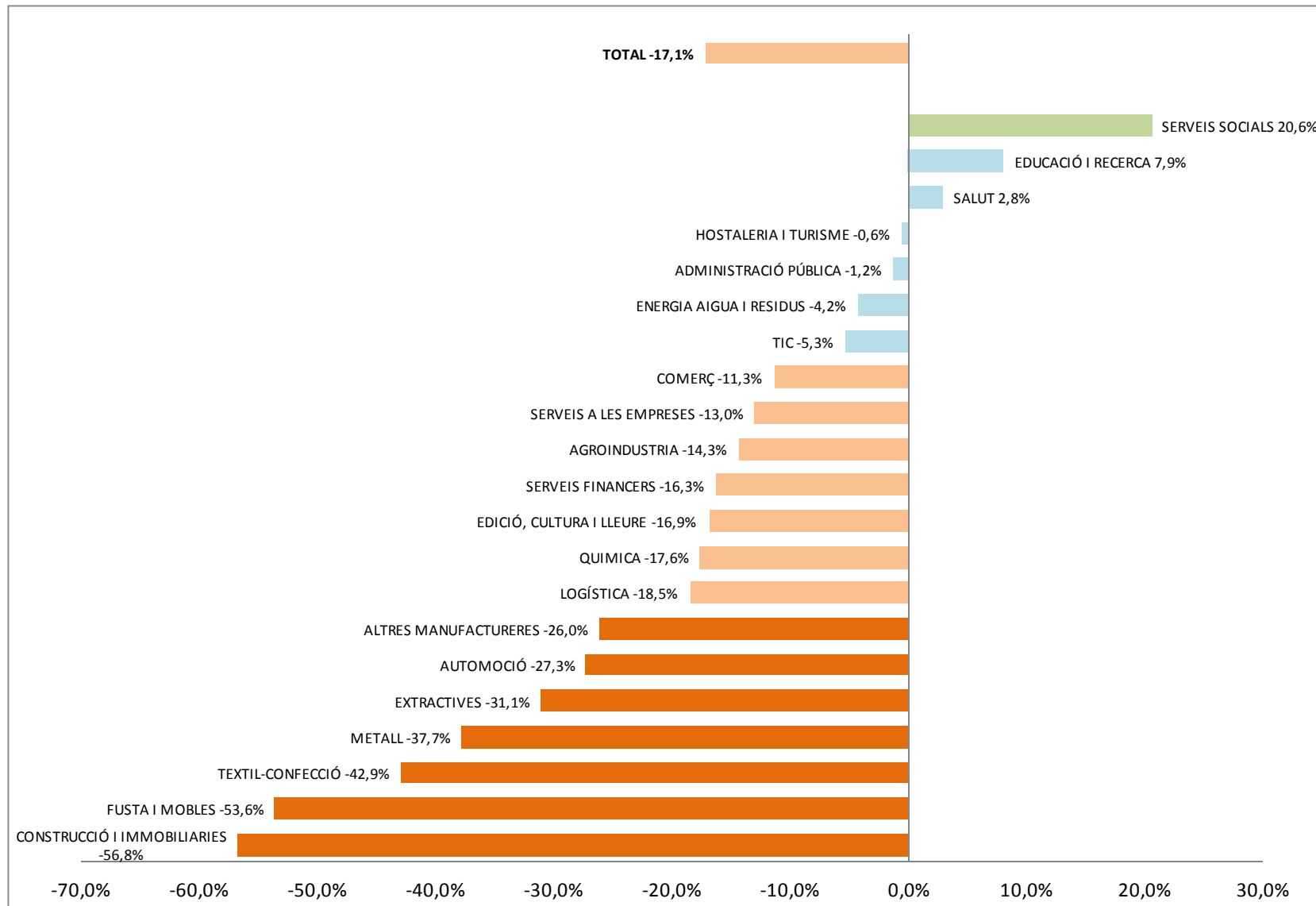


Ajuntament de Badalona

BADALONA: evolució sectors econòmics 2008-2013




BARCELONA PROVÍNCIA: evolució sectors econòmics 2008-2013




BADALONA

ACTIVITATS ECONÒMIQUES PER SECTORS



EVOLUCIÓ 2008-2013

 Fort creixement

 Creixement mitjà

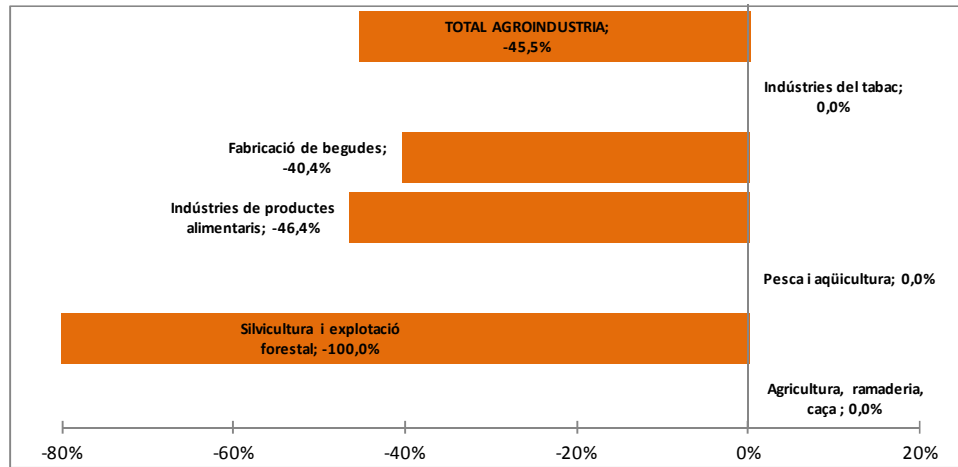
 Estable

PROVÍNCIA BARCELONA
ACTIVITATS ECONÒMIQUES PER SECTORS
EVOLUCIÓ 2008-2013

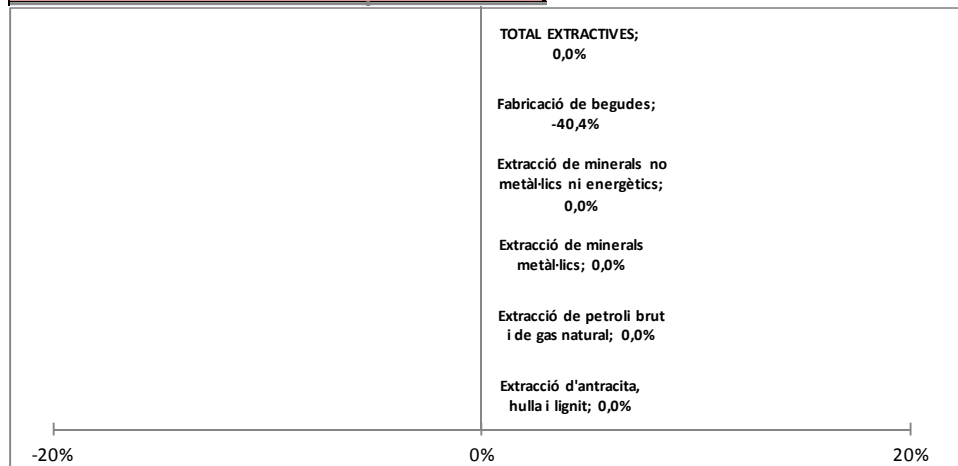
-  Decreixement mitjà
-  Fort decreixement

BADALONA: 2008-2013

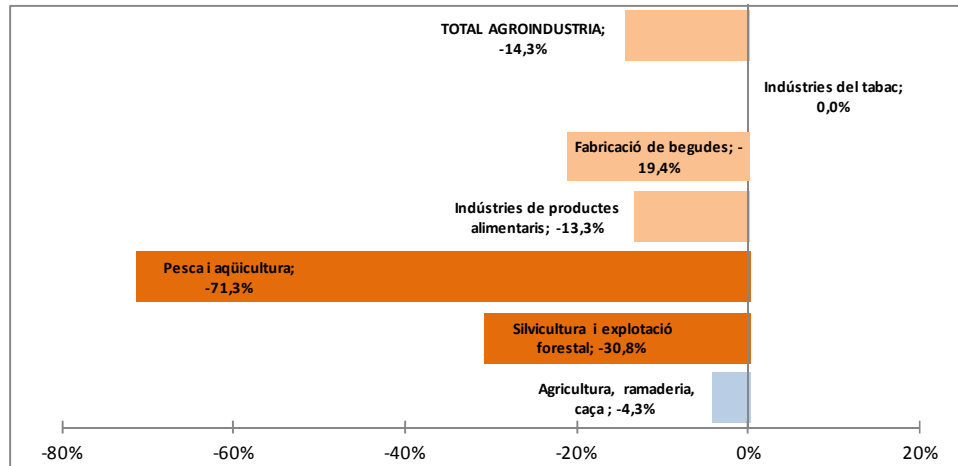
Agroindústria (318 - 0,8%)



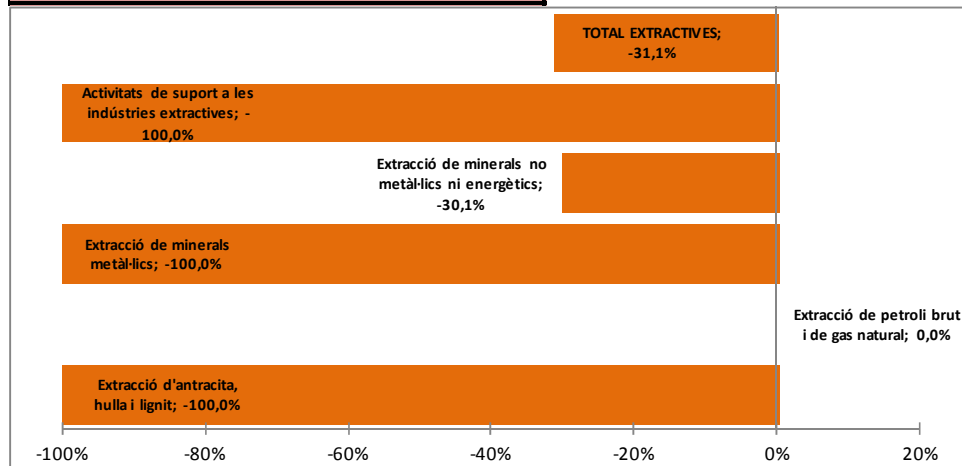
Extractives (0 - 0,0%)



Agroindústria (38.436 - 2,2%)

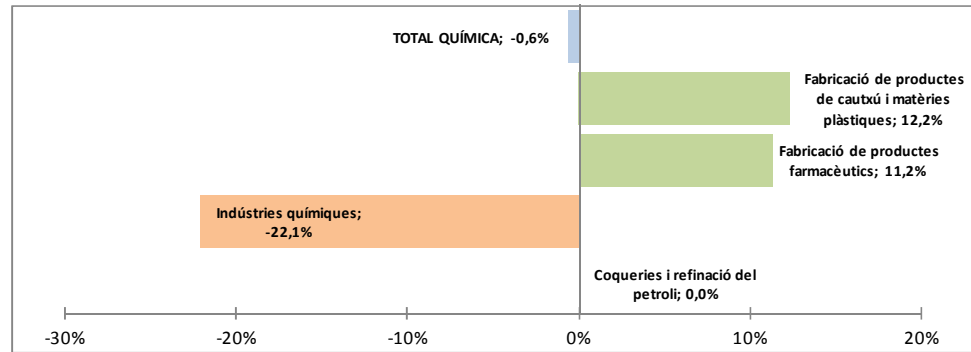


Extractives (1.541 - 0,1%)

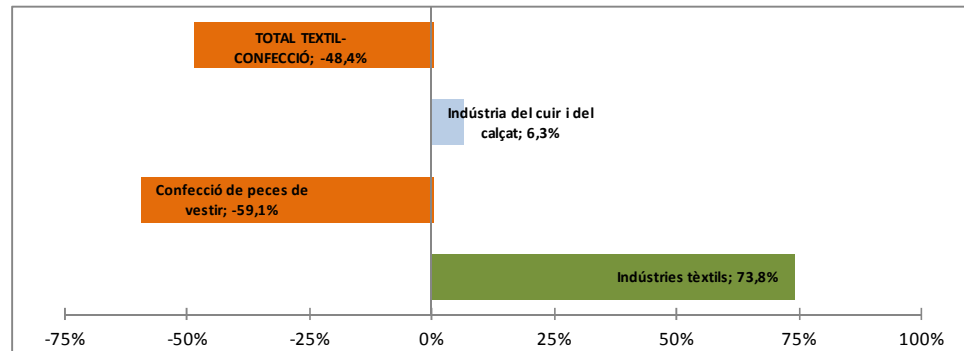


BADALONA: 2008-2013

Química (925 - 2,5%)

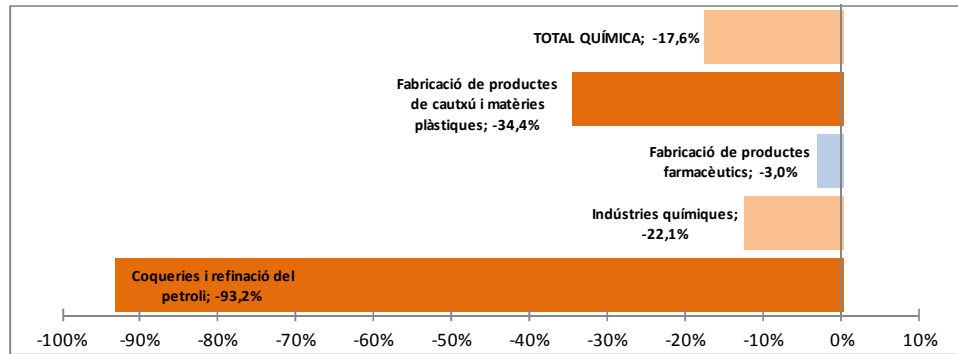


Tèxtil-Confecció (982 - 2,6%)

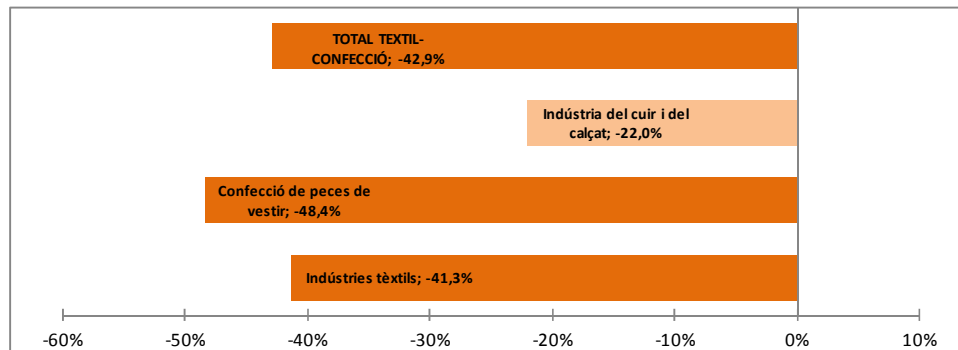


BARCELONA PROVÍNCIA: 2008-2013

Química (57.501 - 3,3%)

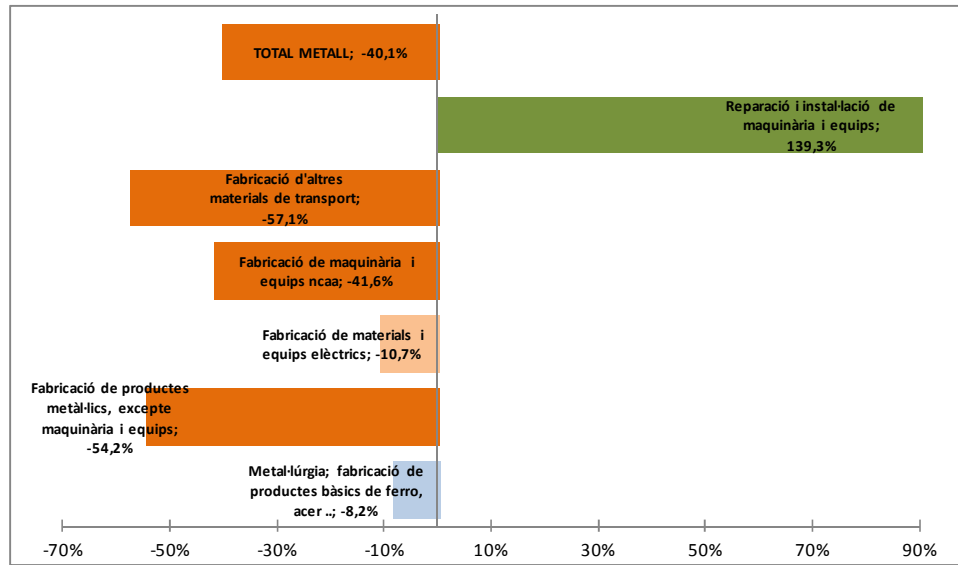


Tèxtil-Confecció (22.999 - 1,3%)

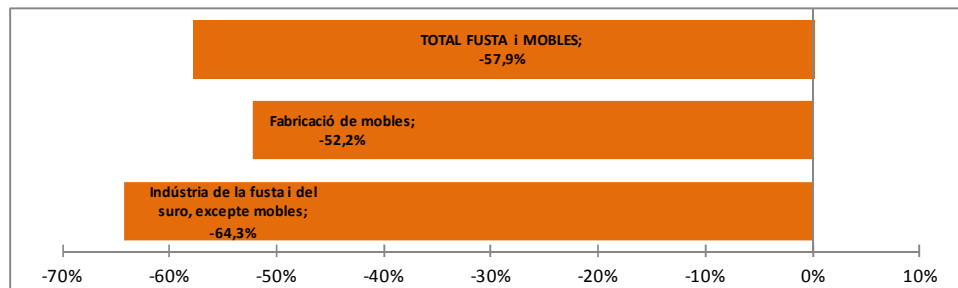


BADALONA: 2008-2013

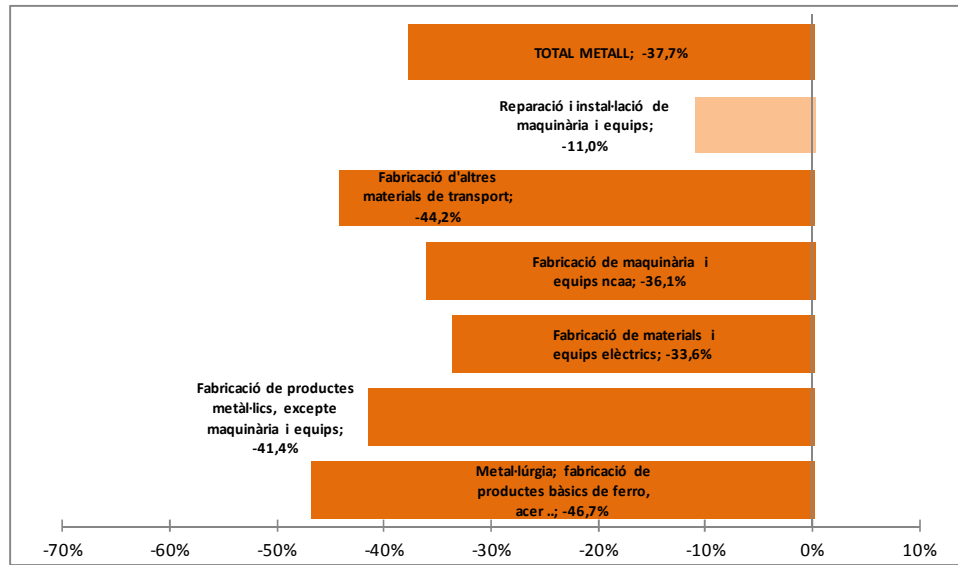
Metall (2.198 - 5,9%)



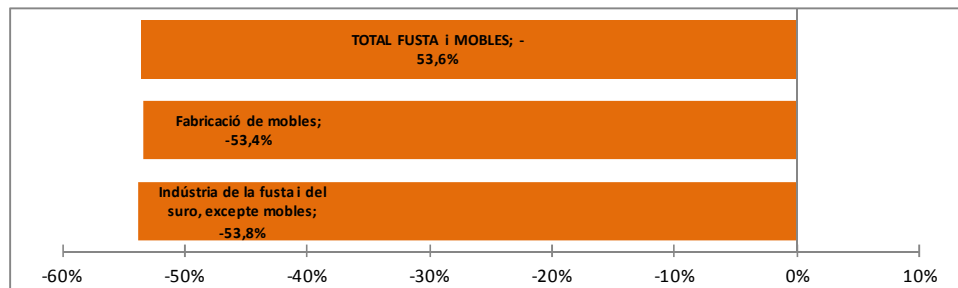
Fusta i Mobles (149 - 0,4%)



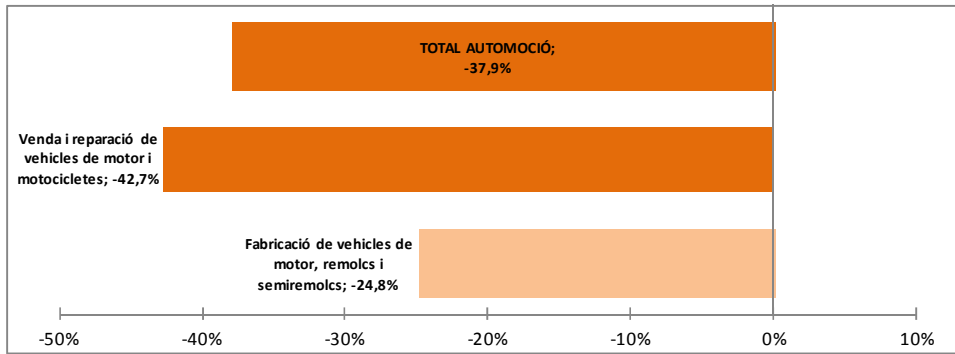
Metall (75.718 - 4,3%)



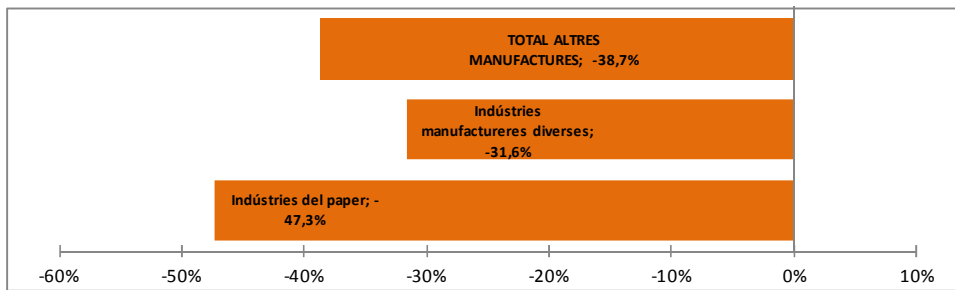
Fusta i Mobles (6.596 - 0,4%)



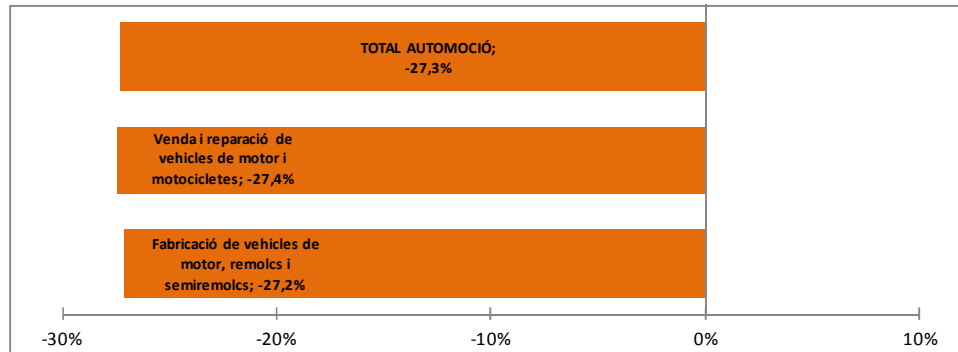
Automoció (485 - 1,3%)



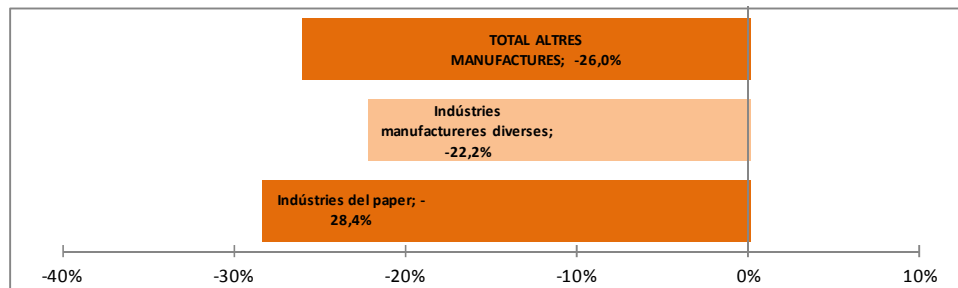
Altres manufactures (174 - 0,5%)



Automoció (56.540 - 3,2%)

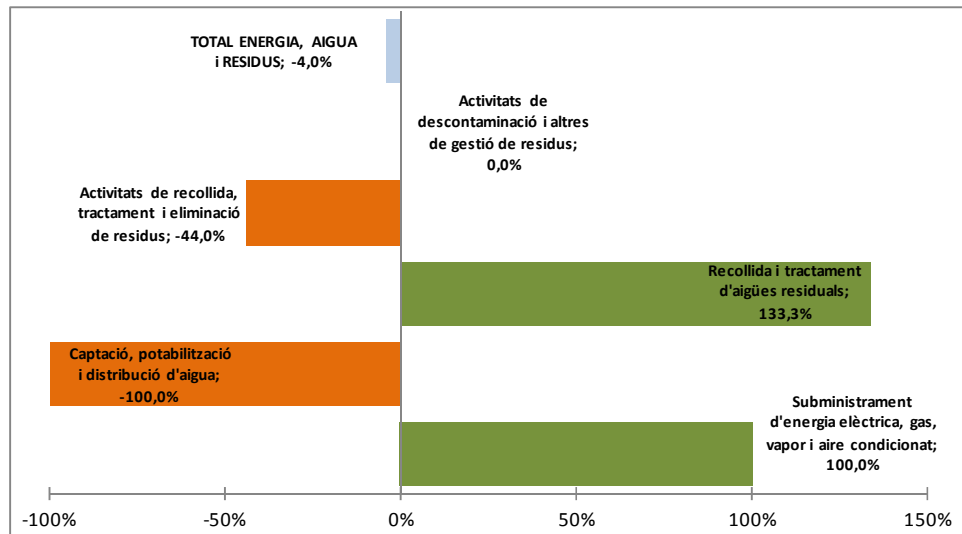


Altres manufactures (12.268 - 0,7%)

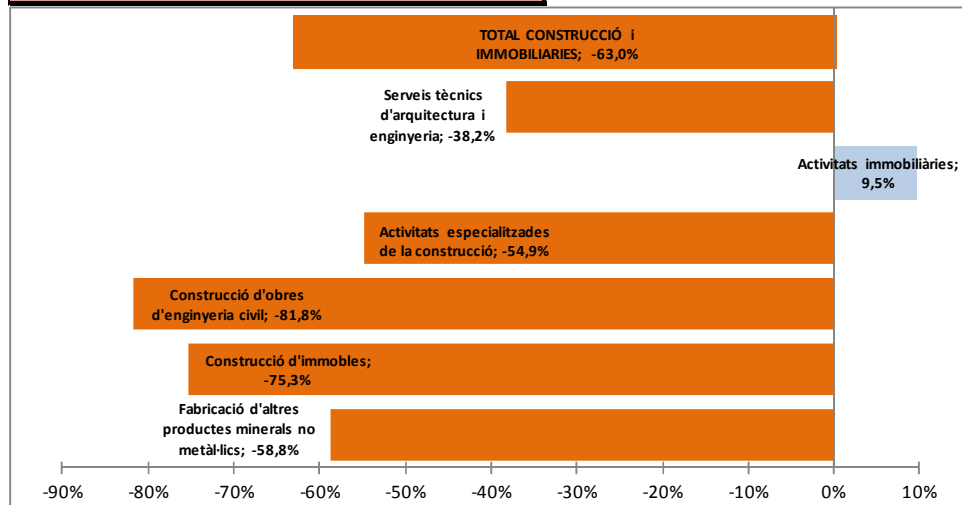


BADALONA: 2008-2013

Energia, Aigua i Residus (96 - 0,3%)

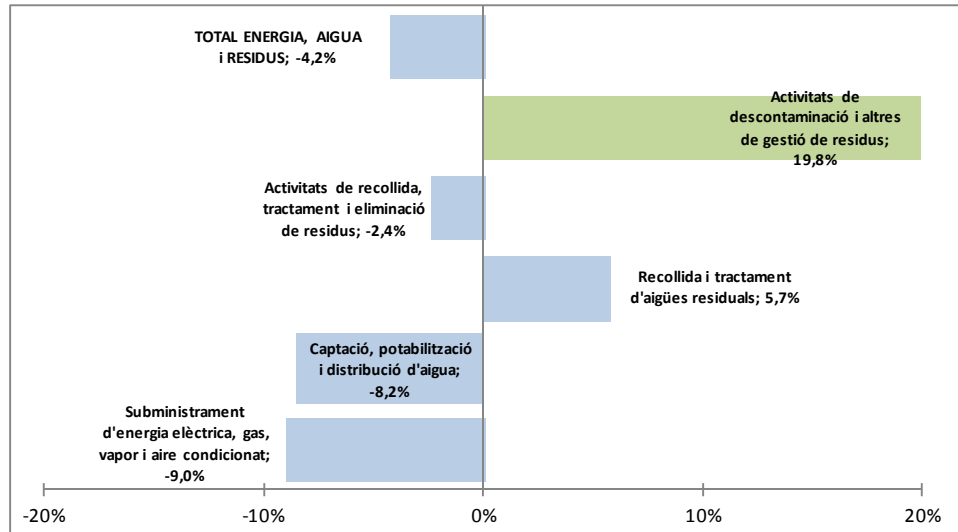


Construcció i Immobiliàries (3.081 - 8,2%)

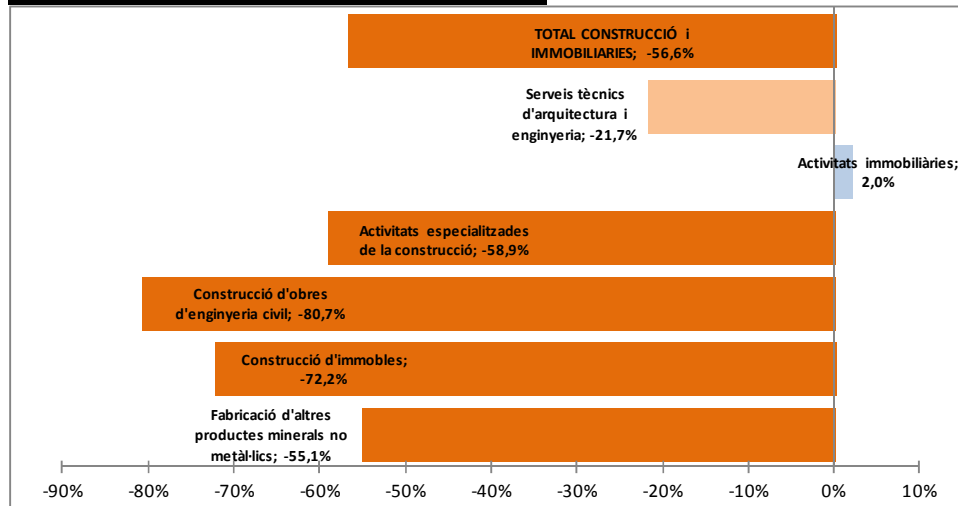


BARCELONA PROVÍNCIA: 2008-2013

Energia, Aigua i Residus (19.718 - 1,1%)

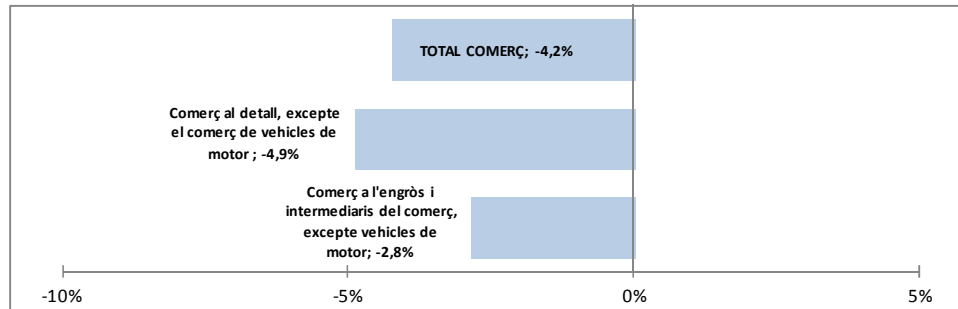


Construcció i Immobiliàries (106.719 - 6,1%)

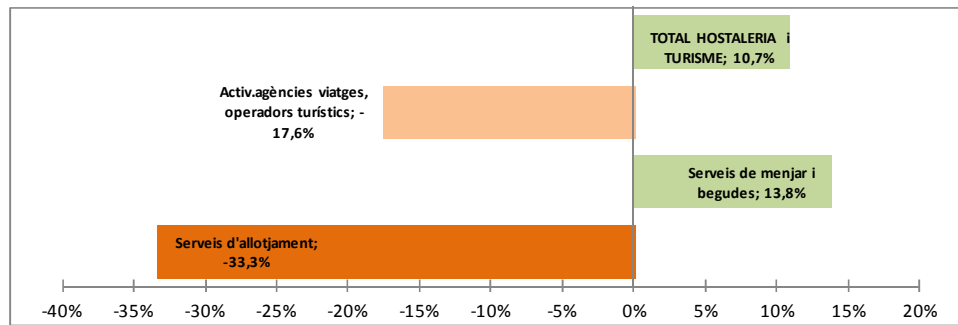


BADALONA: 2008-2013

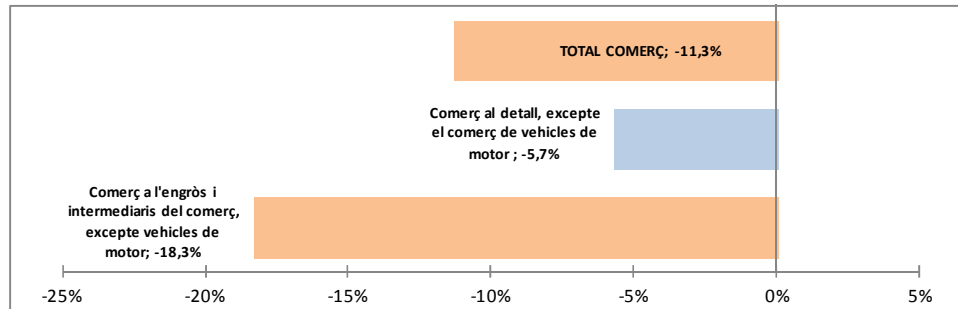
Comerç (9.488 - 25,3%)



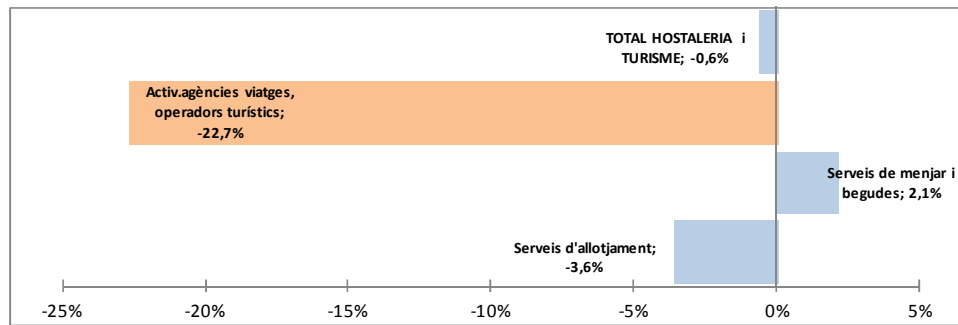
Hostaleria i Turisme (1.567 - 4,2%)



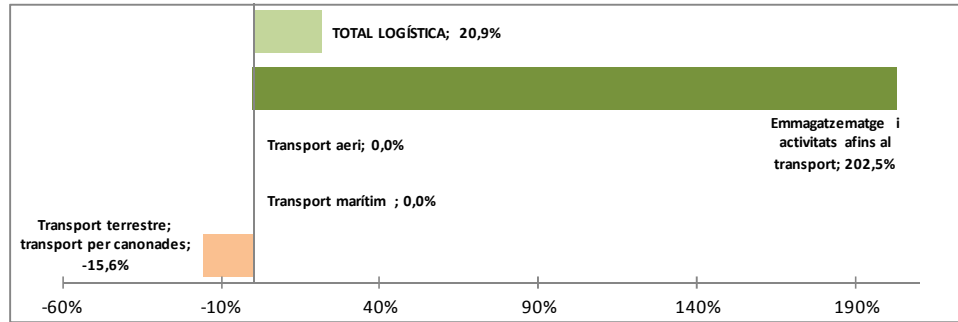
Comerç (295.849 - 17,0%)



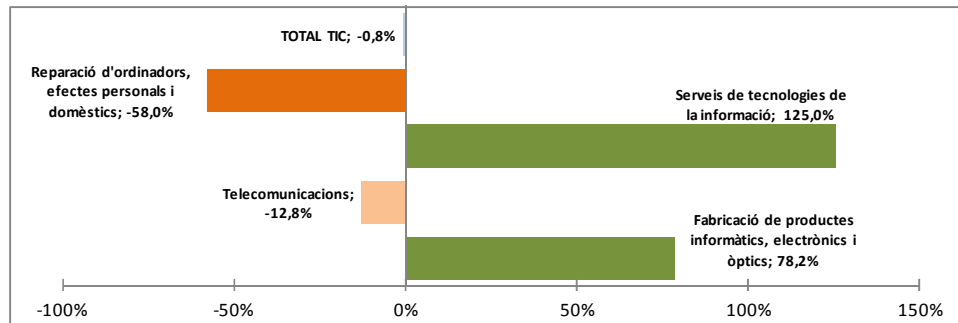
Hostaleria i Turisme (116.616 - 6,7%)



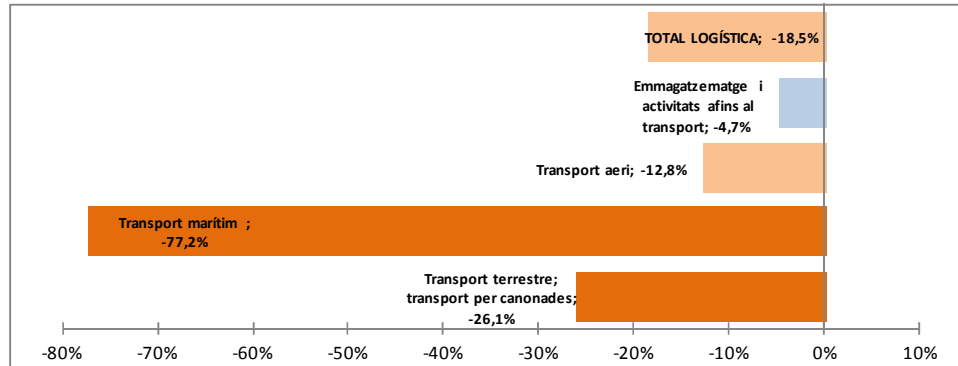
Logística (2.359 - 6,3%)



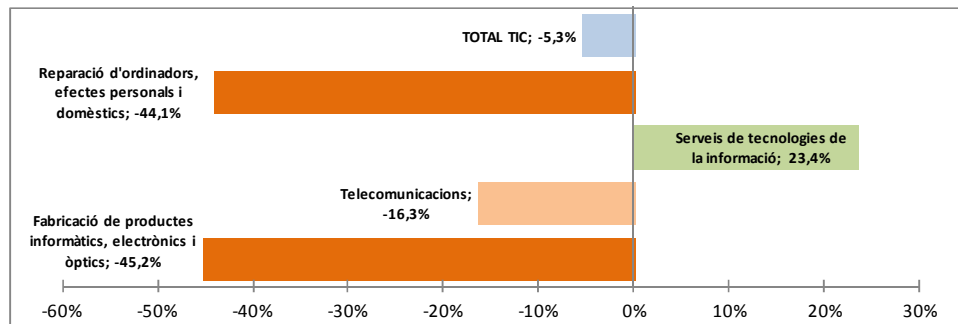
TIC (367 - 1,0%)



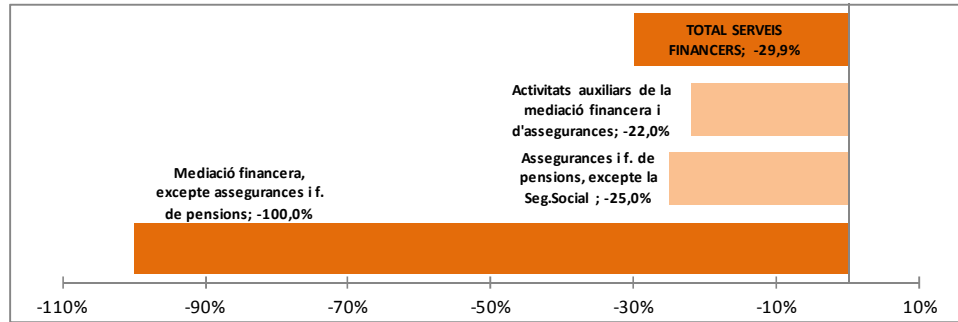
Logística (72.739 - 4,2%)



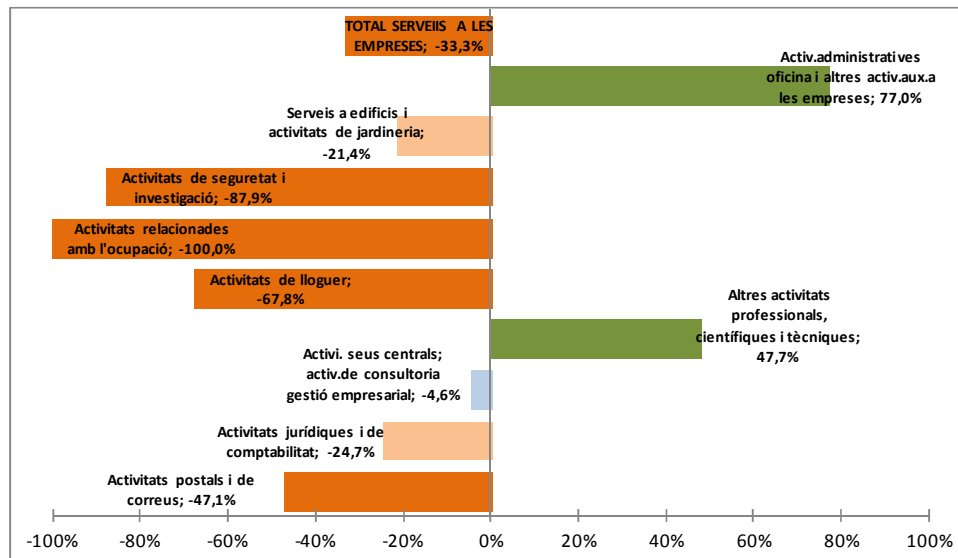
TIC (48.285 - 2,8%)



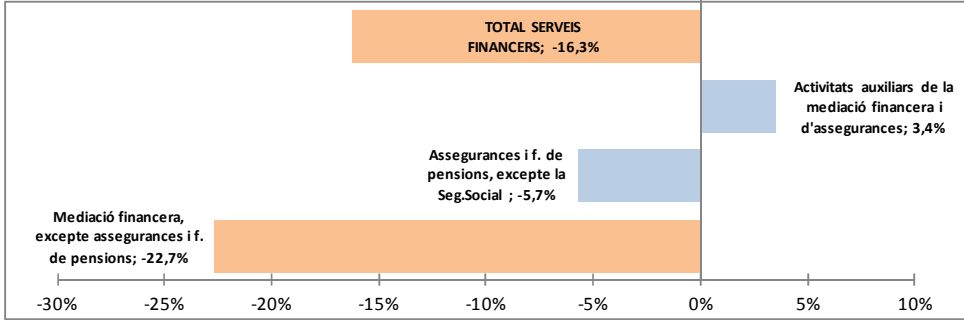
Serveis financers (101 - 0,3%)



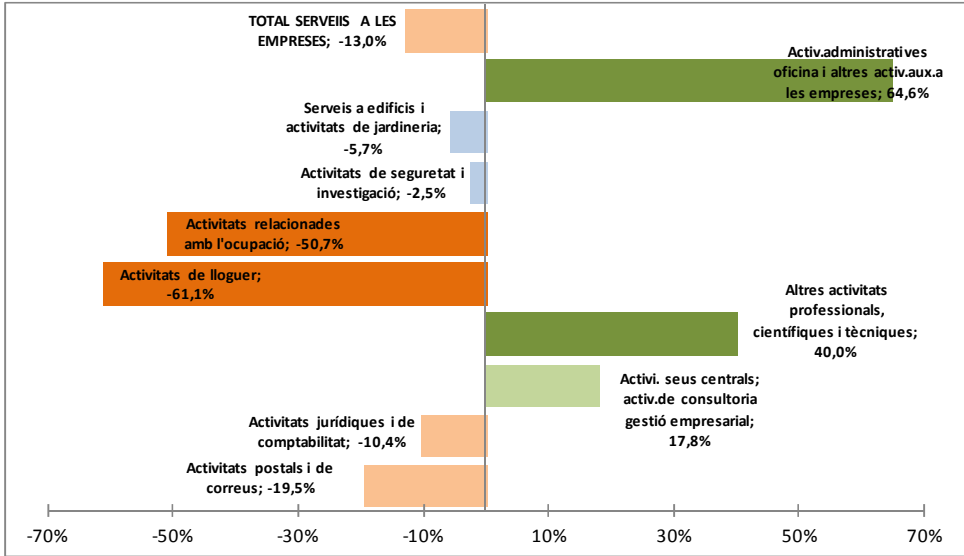
Serveis a les empreses (2,430 - 6,5%)



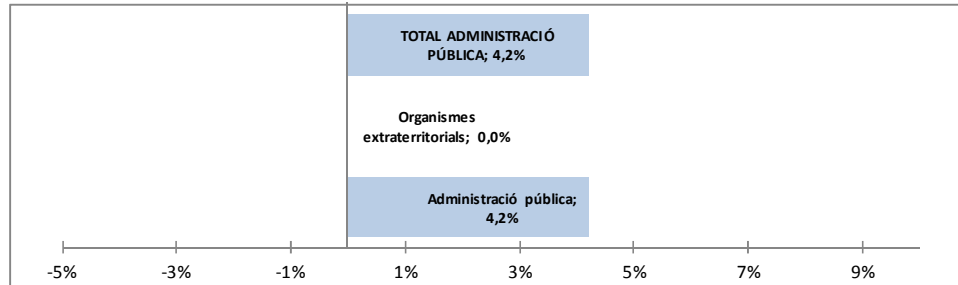
Serveis financers (50.028 - 2,9%)



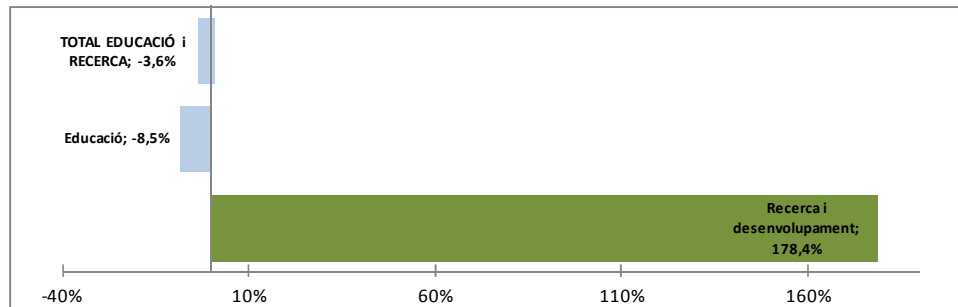
Serveis a les empreses (213.643 - 12,3%)



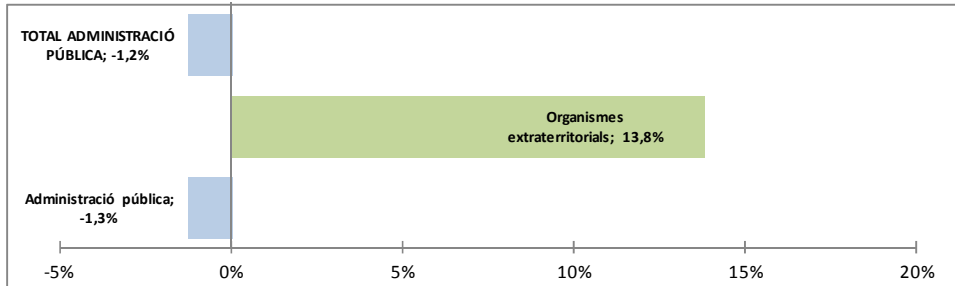
Administració pública (1.771 - 4,7%)



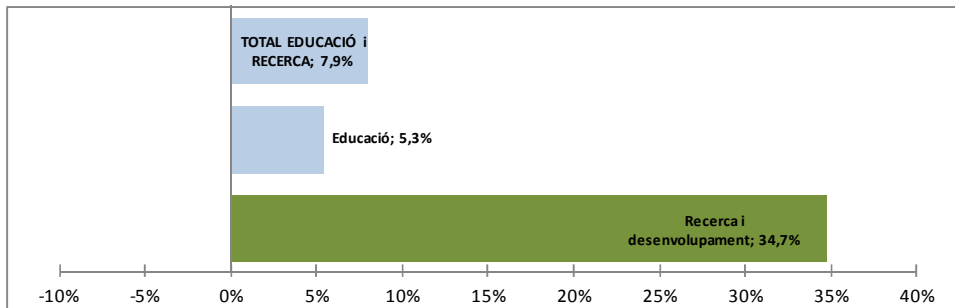
Educació i Recerca (2.694 - 7,2%)



Administració pública (119.250 - 6,9%)

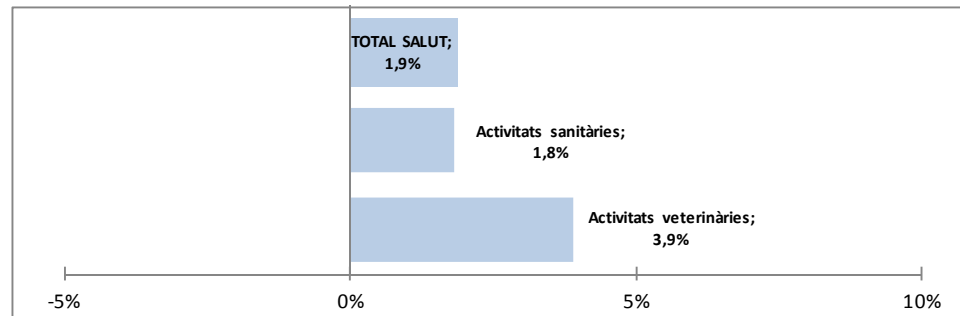


Educació i Recerca (122.375 - 7,0%)

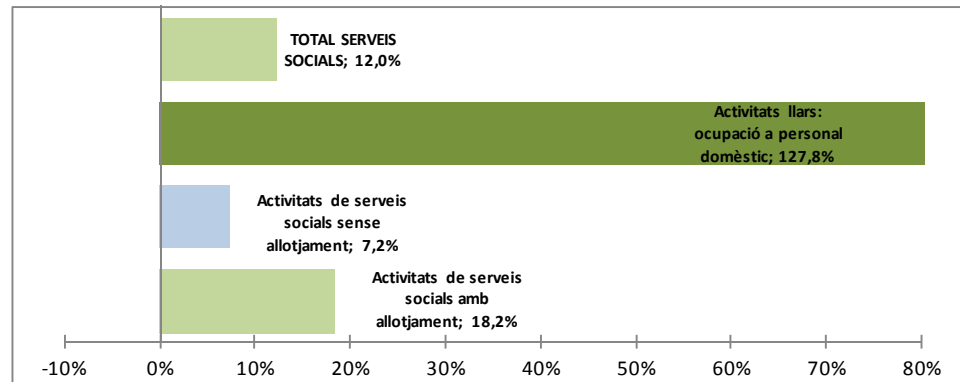


BADALONA: 2008-2013

Salut (5,112 - 13,6%)

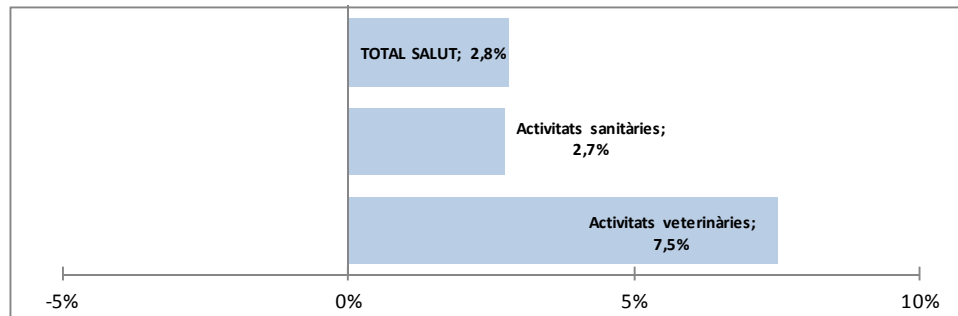


Serveis socials (1.026 - 2,7%)

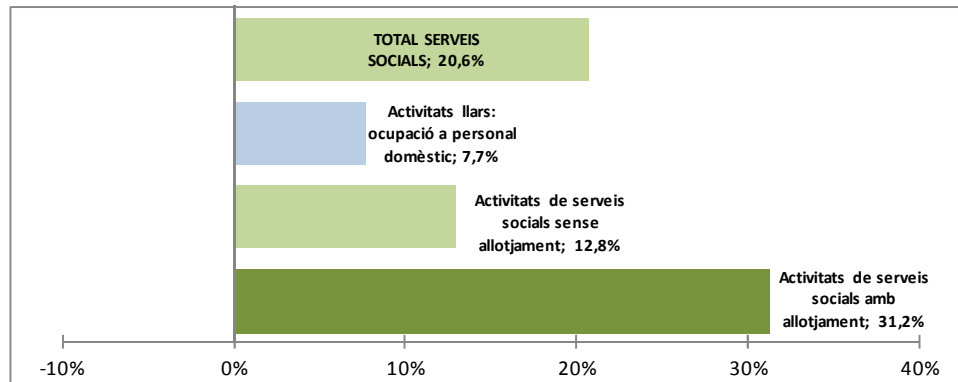


BARCELONA PROVÍNCIA: 2008-2013

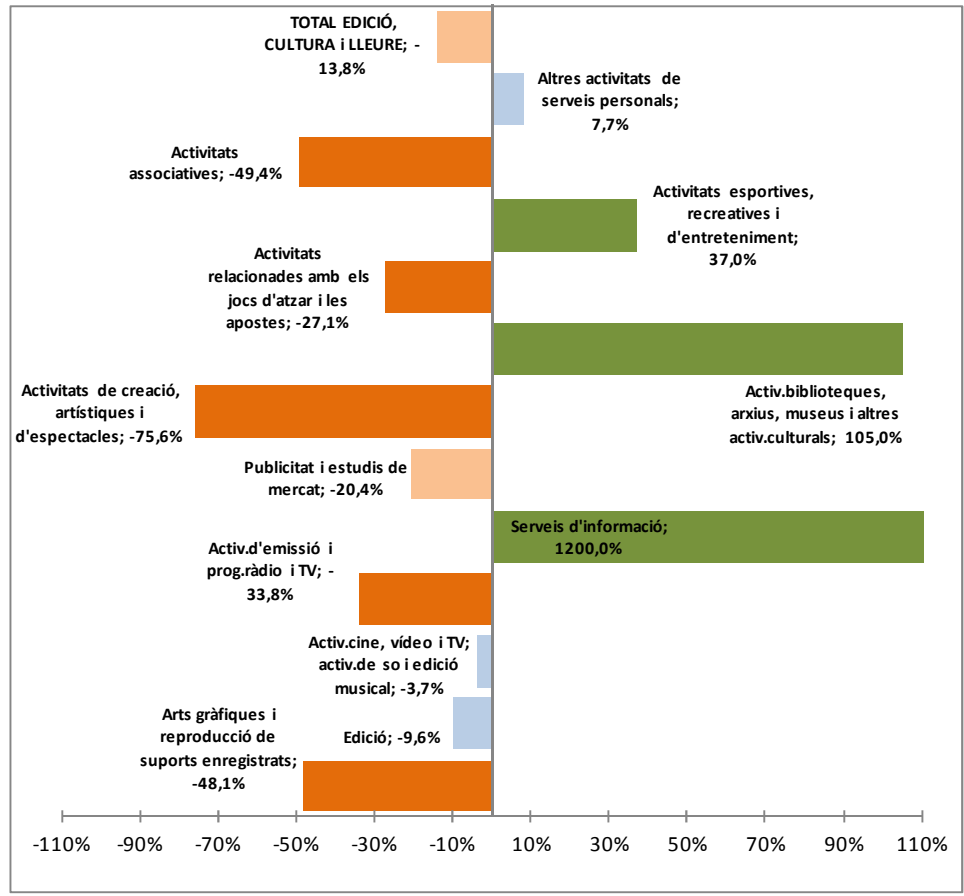
Salut (119.252 - 6,9%)



Serveis socials (60.385 - 3,5%)

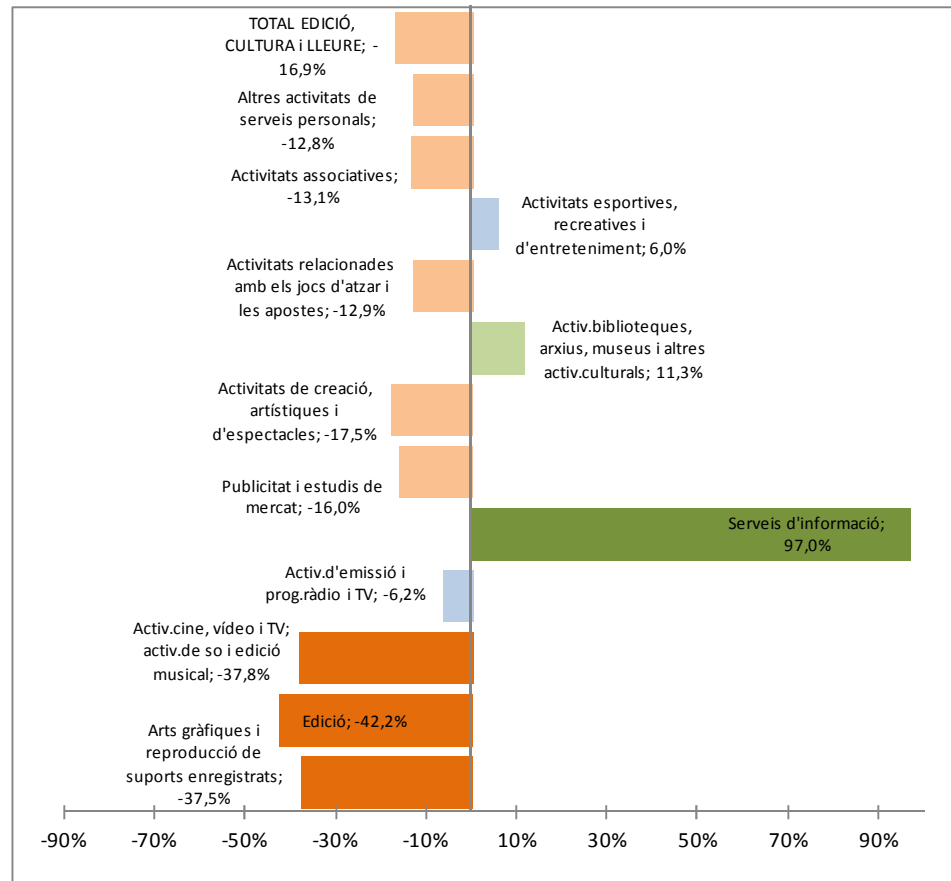


Edició, cultura i lleure (2.136 - 5,7%)



BARCELONA PROVÍNCIA: 2008-2013

Edició, cultura i lleure (124.278 - 7,1%)



Amb la col·laboració de:

